

[www.seabob.com](http://www.seabob.com)

High-performance technology  
Made in Germany

# Contents

High-performance toys.	7
E-Jet Power System.	8
Are you ready?	11
High-tech across the board.	12
Rediscover the Element.	15
Unlimited riding pleasure.	16
Anything is possible.	19
Dive into a new dimension.	20
Play without Limits.	23
Optimal handling.	24
The technology.	27
The Controlgrips.	28
The Cockpit.	31
SEABOB Cam.	32
The Pilot belt system.	35
SEABOB F5.	36
SEABOB F5 <b>S</b> .	37
Performance <b>Raise</b> .	38
Technical data.	40
The colours.	42
Bicolour and Big Label Design.	45
Exclusive in design.	46
The SEABOB system.	49





## High-performance toys.

For intense pleasure driving in the water.

For people looking for ultimate fun and enjoyment in their lives, we build water sleds with the greatest thrill factor in the world. The SEABOB F5 and the SEABOB F5 S.

The outstanding features of the SEABOB F5 are its unanticipated agility in the water and the extremely low vehicle weight of only approximately 29 kg. The low weight of the SEABOB F5 makes for optimal handling properties.

The SEABOB F5 S is also a lightweight device tipping the scales at approximately 34 kg. It distinguishes itself by means of its strong driving performance and its irrepresible propulsion in the water.

Neither vehicle requires a driving licence and their electrical drive make them completely ecologically sound. High performance luxury toys for intense fun in the water and emission-free for zero impact on the environment.

## E-Jet Power System.

Emission-free drive technology.

The worldwide patented E-Jet Power System works according to the principle of water displacement. The water is sucked in by the powerfully rotating impeller and forced out in the jet channel under high pressure. The thrust developed in this way propels the SEABOB forward in superior fashion.

Maximum thrust requiring little energy makes the E-Jet Power System a unique drive mechanism for powerful watercraft. Thanks to its electro-technology, the system is absolutely environmentally friendly and offers extremely low operating costs.





## **Are you ready?**

**Turn up the power and away you go.**

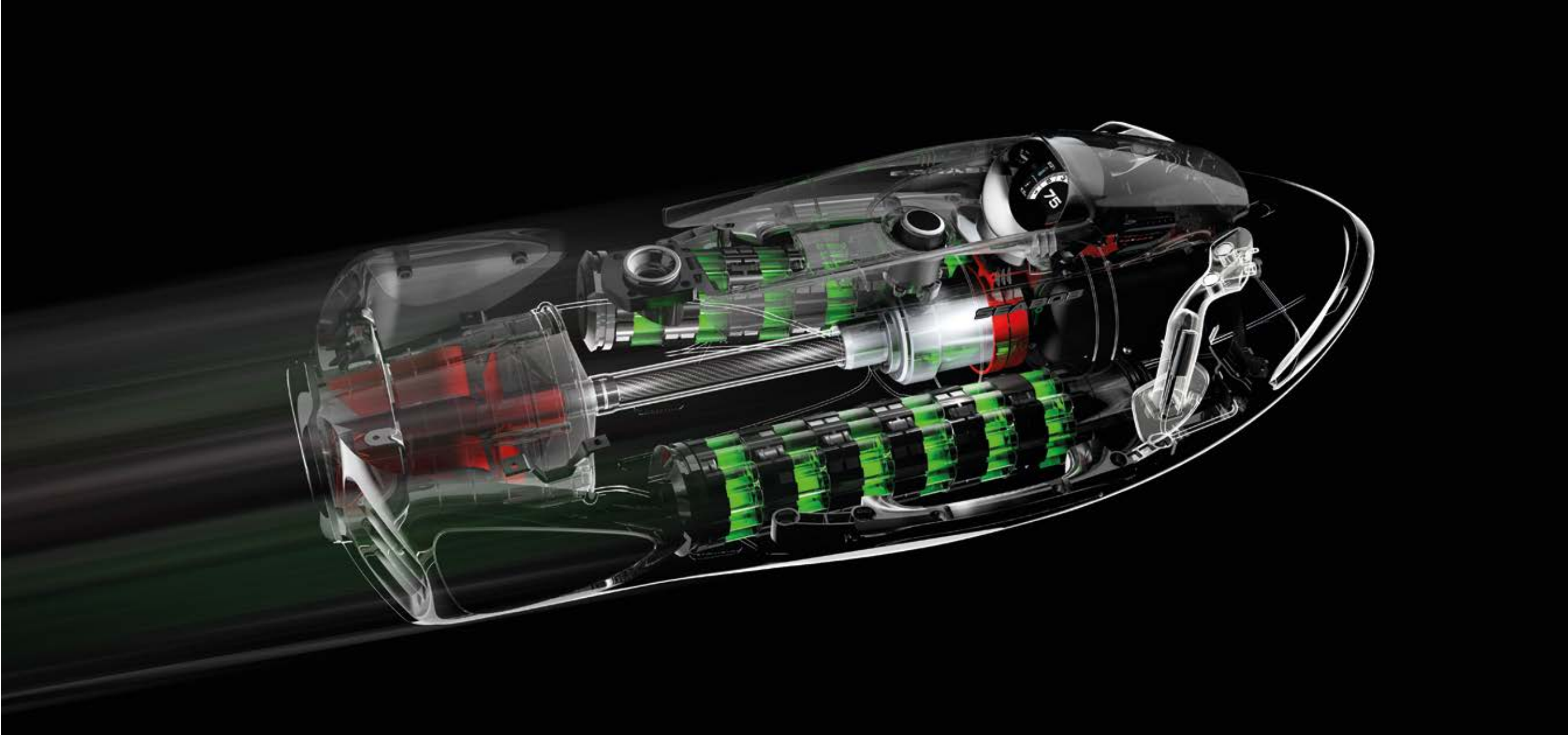
If you are looking for the ultimate driving pleasure, simply head for the water. No boundaries, no limits. Experience vast open spaces and pure freedom with the SEABOB. Whatever gear you have selected, you will receive an unforgettable driving experience.

Speed is regulated via the Controlgrip. The enormous thrust generated between the power levels lends the SEABOB a dynamism and fascination beyond compare.

## High-tech across the board.

Quality right down to the last detail.

The SEABOB is the absolute paragon of cutting-edge technology. In order for the vehicle to live up to this claim, the drive unit was made using premium carbon elements, established ceramic coatings and precious metals resistant to salt water. Meticulously hand-crafted, this water sports vehicle is made of top-grade materials. The uncompromising quality standard is reflected in each and every detail.





## Rediscover the Element.

Intense and irreplaceable.

A SEABOB offers all-round high-performance. Its hydrodynamic shape provides for an astounding degree of agility in the water. Steering and diving could not be easier – all it requires is for the pilot to shift his bodyweight.

Whether you are cruising, zipping through the water or diving. The SEABOB will glide along powerfully with you aboard. Feel the awe-inspiring manoeuvrability and the new-found desire for water which will never relinquish its hold on you again.



## Unlimited riding pleasure.

Relaxed or intensive.

Leisurely gliding. Sporty driving in the water. Safe diving under water. All this is possible with a SEABOB. Now you can actually move through the water like a fish. Freely, both on the surface and at depth.

At the same time, the SEABOB is completely environmentally friendly when in its element. It zooms powerfully and almost silently through the water. Man and machine in perfect harmony.





## **Anything is possible.**

**Experience a unique agility under water.**

The dynamism of the SEABOB jet develops its special appeal under the water. The watercraft can be steered down into the depths simply by applying light pressure. Man and machine in unison, darting around nimbly.

Impressive diving depths of up to 40 metres can be programmed to suit individual requirements via the on-board electronics. A safety cut-off feature reliably ensures that the selected diving depth is not exceeded.

Dive into the fascinating underwater world.

## Dive into a new dimension.

The underwater world awaits.

You will experience a performance never known before when you dive. Whether long or short distances, diving with the SEABOB is pure fascination.

A dive with the SEABOB will become an unforgettable experience. Drive through the expanse of the underwater world with indescribable dynamics. Each ride with the SEABOB is a unique adventure. Experience it.





**Play without Limits.**

Feel the exhilaration.

## Optimal handling. Low weight with powerful thrust.

Easy handling was the uncompromising objective set when developing the new SEABOB generation. For this reason, the challenge in terms of development was clearly defined. Low overall weight. Extremely stable housing. Powerful drive. These properties make the SEABOB a unique water sports craft. The vehicle can be used anywhere and offers optimal handling.





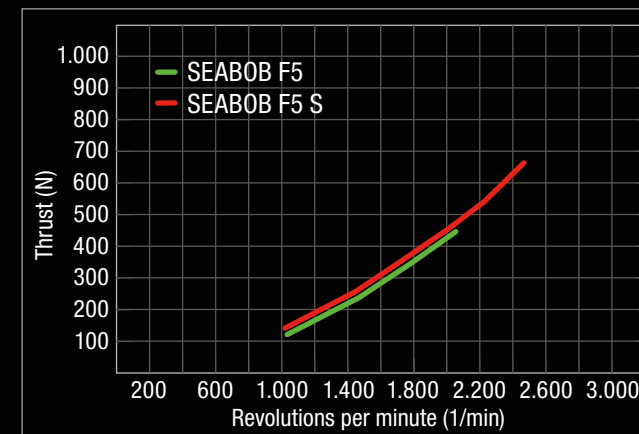
## The technology.

A development with responsibility for the environment.

The specially developed, high-performance electric-drive mechanism with its environmentally friendly technology is an exemplary innovation.

The motor is a high-torque synchronised drive unit featuring a microprocessor-controlled 3-phase sinus power management system. The application of cutting-edge technology enables this motor to achieve the ideal amount of torque with outstanding efficiency. All this, and yet the overall design remains very compact.

The power for the drive mechanism is provided by highly efficient Lithium-Ion accumulators. These high-performance special accumulators are a top-class quality component in the propulsion concept of the SEABOB.



## The Controlgrips.

Switch gears for power. Determine the direction.

A SEABOB is the absolute embodiment of state-of-the-art technology. The pilot steers his water sports craft via two intelligent Controlgrips with Piezo technology.

The drive mechanism is activated by squeezing the trigger. Applying light pressure to the green sensor accelerates the device in continuous powerful thrusts until the desired speed is reached. Propulsion is reduced by pressing the red sensor, thereby slowing down the SEABOB. If required, the craft can be brought to an immediate stop simply by releasing the trigger.

Two further Piezo buttons enable the pilot to program an individual data menu. This includes the electronically-controlled setting of diving depth, operation time and additional parameters.





## The Cockpit.

Clear view. Perfect control.

The central cockpit is located exactly in the driver's field of vision. All important technical data from the engine electronics is shown accurately via the TFT colour display.

It provides the pilot with information on the current driving performance and the selected power level. The accumulator charge state allows you to reliably keep track of the residual capacity.

Furthermore, the driver receives up-to-date information regarding his diving depth and water temperature. The programming functions of the menu can also be conveniently controlled via the TFT display.



## SEABOB Cam.

Capture unique experiences.

The SEABOB can be equipped with integrated camera technology on request. Thereby, two camera systems are integrated in the SEABOB. There is a full-HD camera as a recording system in the watercraft's bow. This camera films and saves everything experienced and discovered in the fascinating underwater world at the push of a button.

Another full-HD camera is found on the information display. This camera is an integrated Action-Selfie-Cam and is activated by simply pressing a sensor. It saves all of the pilot's recordings when driving the SEABOB. With the recording technology switched on, the SEABOB information display performs the monitor function. This allows all camera recordings to be professionally controlled.

All recordings are saved in the SEABOB on-board system and can be directly transmitted to any Smartphone or other alternative storage media with WLAN technology. With the SEABOB-Camsystem, you can always share your unique experiences in the fascinating underwater world with others at any time.





## The Pilot belt system.

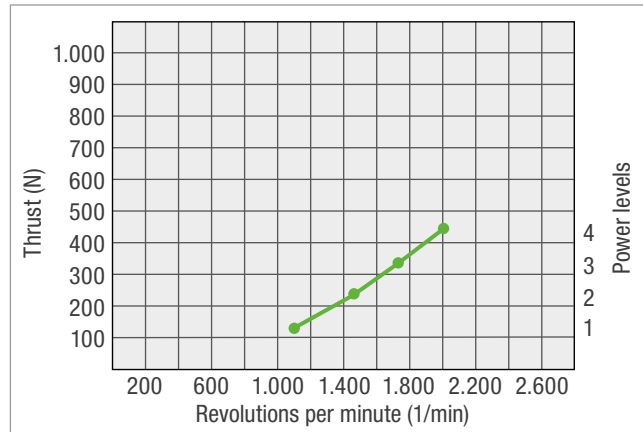
A strong connection.

With its high-performance drive, the SEABOB is the embodiment of strength and ultimate power. The Pilot belt system has been developed specifically for sporty driving in the top speed range. This innovative belt system transforms the tremendous thrust into an exhilarating riding experience and even greater agility in the water.

## SEABOB F5



SEABOB F5

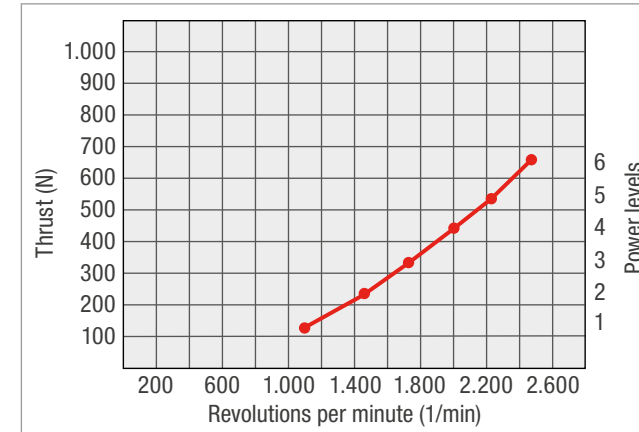


One particular distinguishing feature of the SEABOB F5 is its extremely low weight. Tipping the scales at just 29 kg, the craft boasts a propulsive force of 480 newtons. The E-Jet Power System in the SEABOB F5 is controlled in 4 power levels. These increments lend it a sporty character and guarantee absolute fun and pleasure. Its special degree of dynamism in the water results from the high performance of the craft coupled with the low power-to-weight ratio. The outstanding properties of the SEABOB F5 in terms of handling make it suitable for use in water anywhere. It is at home in the sea. It demonstrates outstanding performance on the surface of the water and when diving. Owing to its extremely high degree of manoeuvrability, the SEABOB F5 can be enjoyed in both small and large pool complexes.

## SEABOB F5 S



SEABOB F5 S



The SEABOB F5 S is the ultimate high-performance craft. Weighing just 34 kg, the vehicle possesses extremely good handling properties out of the water. Its driving performance is second to none. The SEABOB F5 S boasts an impressive propulsive force of 680 newtons.

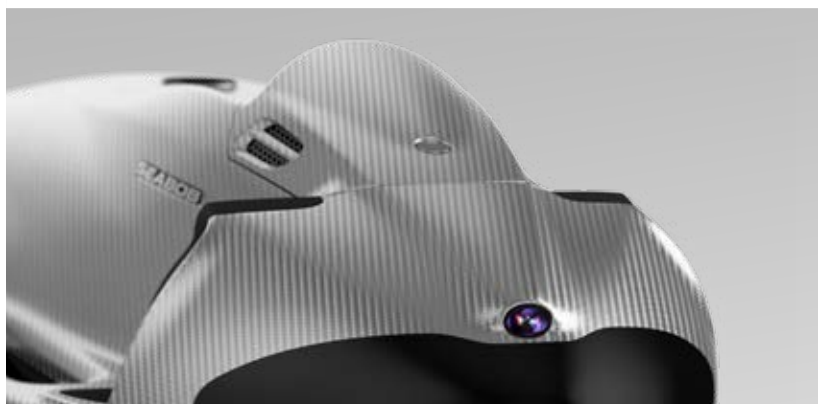
The E-Jet Power System is controlled in 6 power levels. These gears of the SEABOB F5 S allow you to glide along at a relaxed pace in a low gear or, for more ambitious high-speed driving, switch up to 6th gear. The craft has a highly sporty character and stands out in terms of its extraordinary dynamism. Its sporty appearance is emphasised by elements in a matt chrome design. The SEABOB F5 S is at home in the sea and its high degree of manoeuvrability also makes it ideally suited for use in larger pool complexes.

## Performance Raise. Special features for sporty driving.

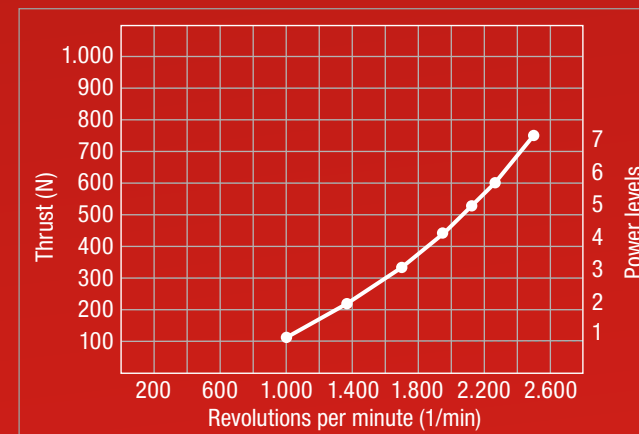
Higher performance and more extensive features: Make your SEABOB F5 S into a high-performance SEABOB F5 SR with the Performance Raise special equipment. An overall performance increase of approx. 10% added thrust is achieved.

An upgrade with Performance Raise offers you additional extensive special features: The SEABOB F5 SR is operated with 7 power gears for example. It also offers the SEABOB-Camsystem as standard, with two integrated cameras, a built-in storage system and a WLAN transmission module. You also have the opportunity to select a Bicolour or Big Label special colour from our range of different colours.

The two tail fins on the SEABOB F5 SR create a sporty design and also increase manoeuvrability further when driving underwater. The SEABOB with Performance Raise is identified by the F5 SR type label on the tail.



SEABOB F5 SR



## Technical data and equipment.

Designation	Technical description	SEABOB F5	SEABOB F5 S	SEABOB F5 SR
Shell	Hard-integral plastic technology	•	•	•
Motor	Performance up to	2.5 kW	4.0 kW	4.5 kW
Drive	Maximum thrust from E-Jet Power System up to	480 N	680 N	745 N
Speed	Depending on conditions over water up to Depending on conditions under water up to	14 km/h 13 km/h	20 km/h 18 km/h	22 km/h 20 km/h
Motor control	Electronic speed control in 4, 6 or 7 power levels between 0 % and 100 % via Piezo buttons	4 power levels	6 power levels	7 power levels
Energy	High-Energy Lithium-Ion accumulators, total capacity approx.	1.1 kWh; 48 V; 22 Ah	1.8 kWh; 48 V; 36 Ah	2.0 kWh; 48 V; 42 Ah
Operating time	Average	50 min	60 min	70 min
Charging time	Standard charging approx. Quick charging approx.	8 h 1.5 h*	8 h 1.5 h*	8 h 1.5 h*
Steering	By simply shifting body weight (left – right, down – up, over and under water)	•	•	•
Stopping	Switching the drive off causes the water resistance to stop the SEABOB within an extremely short distance	•	•	•
Diving depth	Safety cut-off by the built-in depth sensor at a water depth of Electronic control system can be set to maximum water depth of	2.5 m 40 m	2.5 m 40 m	2.5 m 40 m
Dimensions	L x W x H (in mm)	1,152 x 507 x 372	1,152 x 507 x 372	1,152 x 543 x 372
Weight	Approx.	29 kg	34 kg	35 kg
Buoyancy in water	Approx.	14 kg	10 kg	9 kg
Special equipment	Securing device for Pilot belt system	•	•	•
Extras	Elements in a matt chrome design		•	•

Technical modifications and tolerances reserved.

• = standard equipment

\* mains voltage 230 V

## The colours.

Make your choice.

Serial colours. Surface stability.



Protec Yellow matt



Protec Orange matt



Protec Red matt

Special colours. Exclusive design with high-gloss refinement.



Carex Yellow



CAYAGO Orange met.



Ixon Red



Star White



Ferro Silver



Platin Silver met.

The SEABOB serial colours have a matt surface. They are protected against high wear thanks to a special surface technology. Make your choice and give your SEABOB a solid surface with these colours in a matt version.

We also offer you an exclusive colour choice with the special colours, which are applied as a complex multiple-layer paint system. These high-gloss colours give every SEABOB a powerful-sporty overall look.

Further additional colours are available on request.



### Bicolour



White-Red



Silver-Red



Anthracite-Green

### Big Label



White-Red



Silver-Red



Red-White

## Bicolour and Big Label Design.

Intensity in expression.

You can give your SEABOB a particularly intensive look with the high-gloss surfaces Bicolour or Big Label Design. These colour combinations are created by hand using high-quality multiple-layer paint systems and give your SEABOB a special expressiveness. Your SEABOB is given a unique and sporty character with these colour combinations.

## Exclusive in design. Unique and individual.



Chrome package: Display console and tail in matt chrome design



Ushuaia Ibiza Beach Hotel Special Edition



Hard Rock Hotel Ibiza Special Edition

We offer you a number of fascinating design options to refine your SEABOB. You can give it your own personal touch in the colour and surface design. Design your SEABOB according to your own demands. Tell us about your special requests. We will check what we can do to ensure your SEABOB exudes even more fascination.







**SEABOB Weight.**

For professional scuba diving with your SEABOB.



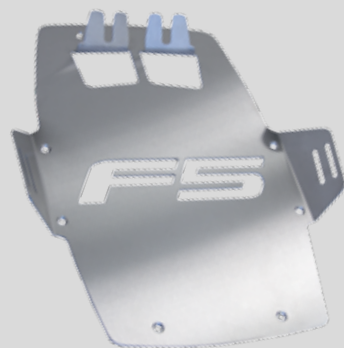
**SEABOB Bag.**

Carrier bag for on the way and travelling.



**Pilot belt system.**

For sporty driving in the top speed range.



**SEABOB Rack.**

The secure wall and floor holding device.



**Quick charger.**

For extremely short charging times.



**SEABOB Cart.**

For comfortable transport of your SEABOB.

## The SEABOB system.

The perfect combination.

## Imprint.

The SEABOB models and accessories depicted in this catalogue are the latest models. Technical specifications and design are subject to change. The colour samples in this catalogue may differ from the actual colours.

As of 01/2017

Errors excepted.

© 2017 CAYAGO AG  
All rights reserved.

**CAYAGO**  
LUXURY SEATOYS

CAYAGO AG  
Flachter Str. 32  
D-70499 Stuttgart  
GERMANY

**Sales and Production:**  
CAYAGO AG  
Leibnizstr. 4  
D-32108 Bad Salzufen  
GERMANY

Tel. +49 5222 80350-0

info@seabob.com  
www.seabob.com