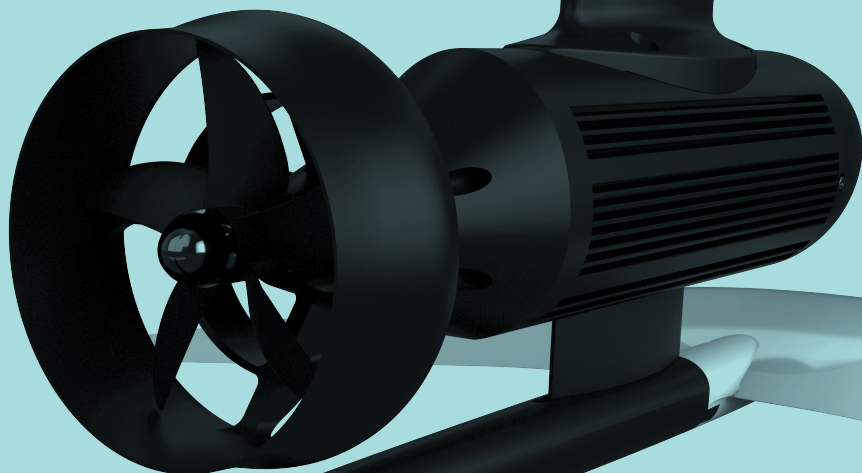


*e-FOIL*  
**USER GUIDE**



**takuma**  
*fly above water*

# WARNING

1. Once you fall down from the efoil, please release the trigger switch instantly!
2. Make sure the waterproof case's snap latch is locked before riding the e-foil.
3. When the waterproof case get damage, please stop to use the remote.



## SPECS

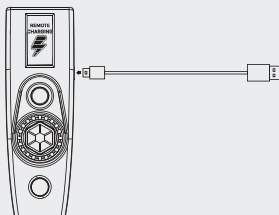
USING TIME: **14 HR**    CHARGE TIME: **3.5 HR**    WEIGHT: **140 G**    STANDBY TIME: **17 HR**  
WATER-PROOF CASE: **IPX7**

## CHARGING

AC adaptor 5V 5% min. 500mA

**PLEASE MAKE SURE THE DEVICE IS COMPLETELY DRY BEFORE CHARGE.**

Charging cable: Micro USB

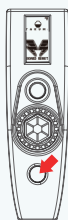


# HOW TO USE REMOTE


## 1. POWER ON/OFF



1. Open the snap latch and take out the remote

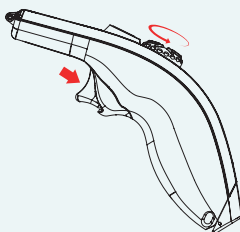


2. Press & hold 3sec. until OLED turn on

3. Turn on the board. When the remote shakes and  shows on the OLED screen, that means remote and board are connected

## 2. START TO RIDE

Trigger switch must keep pressing while riding, once you release the trigger, motor will stop.



Dial the throttle button to adjust speed.

## 3. WHEN YOU START OR ONCE YOU RELEASE THE TRIGGER

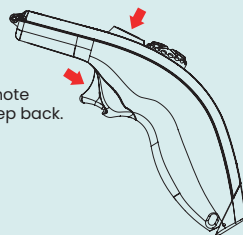
The dial throttle must go back to minimum position, then hold the trigger switch.

## 4. TURBO MODE

Turbo button makes take off much easier for beginners.


The e-foil board needs enough speed and power to leave water; therefore, the mode of remote should be in the maximum. After leaving the water, speed will decrease then you have to step back. Just pressing the Turbo button and the speed will increase 20%, releasing the button will return. You don't need to adjust the speed by down and up.

It makes easier to leaving the water !



## NOTE:

IF THE REMOTE CAN NOT CONNECT WITH THE BOARD ,PLEASE FOLLOW THE STEPS AS BELLOW :

1. Turn off the board's power and remote
2. Turn on the board's power.
3. Press & hold remote's power button while OFF, until OLED shows "PAIRING..."
4. When the remote shakes and OLED shows , it means paired

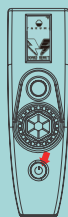


**takuma**  
fly above water

# QUICK START GUIDE



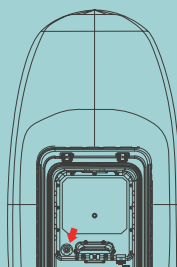
- 1.**  
Open the snap latch  
and take out the remote



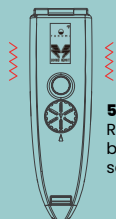
- 2.**  
Press and hold 3sec the power  
button until OLED turn on



- 3.**  
Put the remote back and lock  
the Snap latch



- 4.**  
Turn on the power



- 5.**  
Remote will shake and board's  
battery status will show on  
screen



- 6.**  
Keep pressing the trigger,  
dial the throttle to adjust the  
speed, and ready to fly !

1. ONCE YOU FALL DOWN FROM THE EFOIL, PLEASE **RELEASE THE TRIGGER SWITCH INSTANTLY!**
2. MAKE SURE THE WATERPROOF CASE'S **SNAP LATCH IS LOCKED BEFORE RIDING THE E-FOIL.**
3. WHEN THE WATERPROOF CASE GET DAMAGE, PLEASE **STOP TO USE THE REMOTE.**